



Shri Vile Parle Kelavani Mandal's  
**DWARKADAS J. SANGHVI COLLEGE OF ENGINEERING**  
(Autonomous College Affiliated to the University of Mumbai)  
NAAC Accredited with "A" Grade (CGPA : 3.18)





Shri Vile Parle Kelavani Mandal's

**DWARKADAS J. SANGHVI COLLEGE OF ENGINEERING**

(Autonomous College Affiliated to the University of Mumbai)

NAAC Accredited with "A" Grade (CGPA : 3.18)



# First Year Engineering Admission Process



Admission to the B.Tech. Programs in DJSCE will be based on the entrance test “MHT-CET”, which will be conducted by the State CET Cell, Maharashtra State

S. No.	B. Tech Program	Intake
1.	Electronics and Telecommunication Engineering	180
2.	Information Technology	180
3.	Computer Engineering	180
4.	Mechanical Engineering	180
5.	Computer Science and Engineering (Data Science)	120
6.	Artificial Intelligence and Machine Learning	60
7.	Artificial Intelligence and Data Science	60
8.	Computer Science and Engineering (IOT and Cyber Security with Blockchain Technology)	60



## Allocation of seats within Sanctioned Intake for First Year (80% CAP and 20% Institute Seats)

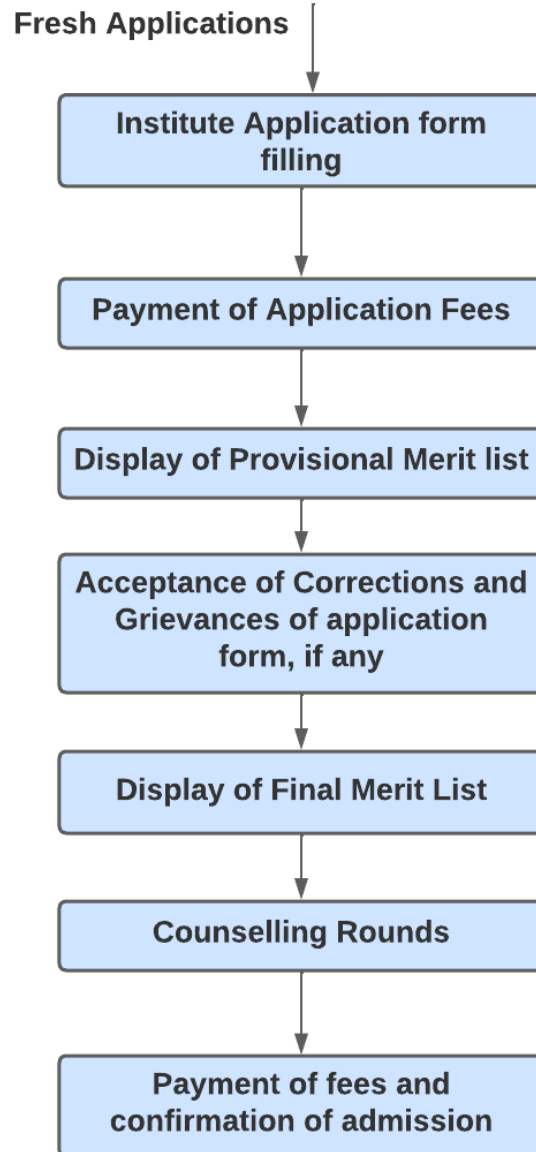
Sanctioned Intake	Institute Seats (OPEN)	CAP Seats
180	36	MS Seats: 44
		AI Seats: 8
		Minority Seats: 92
120	24	MS Seats: 30
		AI Seats: 5
		Minority Seats: 61
60	12	MS Seats: 14
		AI Seats: 3
		Minority Seats: 31

MS: Maharashtra Seats  
AI: All India Seats

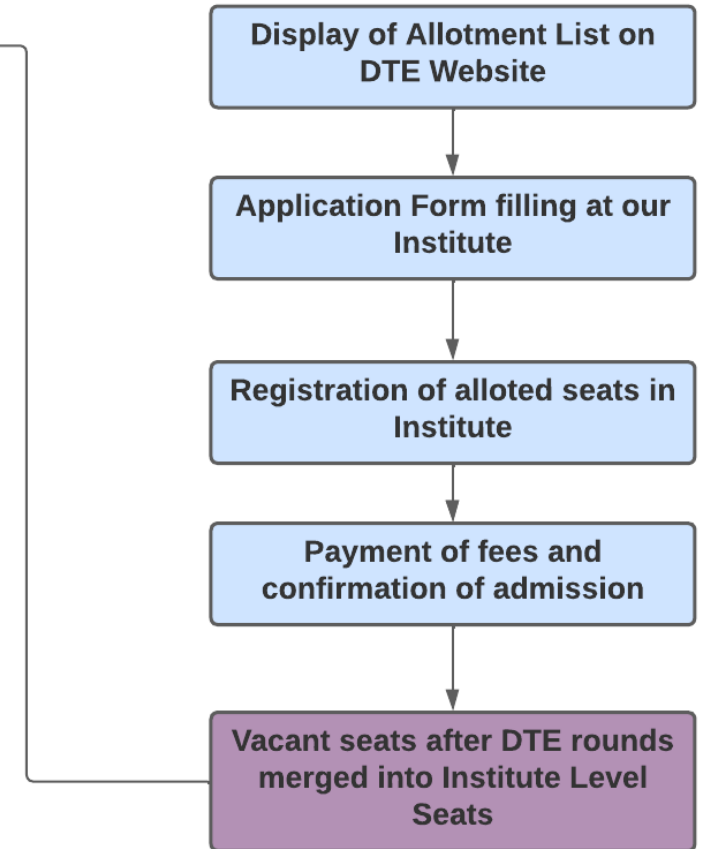


# DJSCE Admission Process

## 20% Institute Level Seats



## 80% DTE Alloted Seats



*Thank  
you*

